

# facility characteristics

---

agility

variety

visibility

movement

u-tech

efficiency

# Questions to Reflect Upon

- How is the building organized?
- How is the building zoned?
- How varied are the learning places?
- How flexible are the learning places?
- What space types are most appropriate?

# other resources

**Karl Fisch - Did You Know?**

<https://youtu.be/XrJjfDUzD7M>

**Ken Robinson - Creativity**

<https://youtu.be/iG9CE55wbtY>

**Larry Rosenstock - High Tech High**

[https://youtu.be/6rv\\_rmJYorE](https://youtu.be/6rv_rmJYorE)

**Five Keys to Project-based Learning**

[https://youtu.be/hnzCGNnU\\_WM](https://youtu.be/hnzCGNnU_WM)

**Project-based Learning Start to Finish**

<https://youtu.be/-OWX6KZQDoE>

**CEFPI MacConnel Award Submissions**

<http://macconnell.cefpi.org/>

**Learning Space Toolkit**

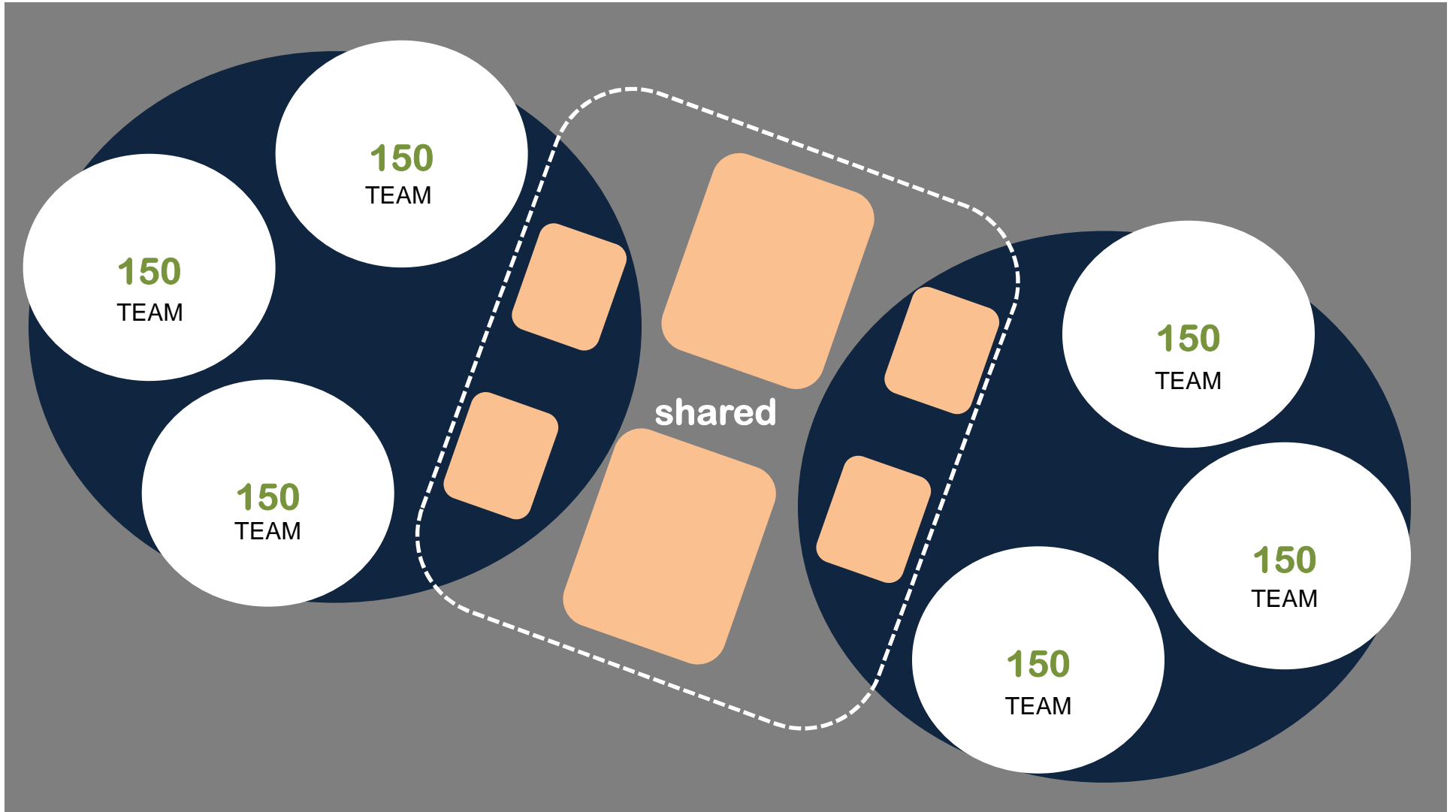
<http://learningspacetoolkit.org/space-browser/>

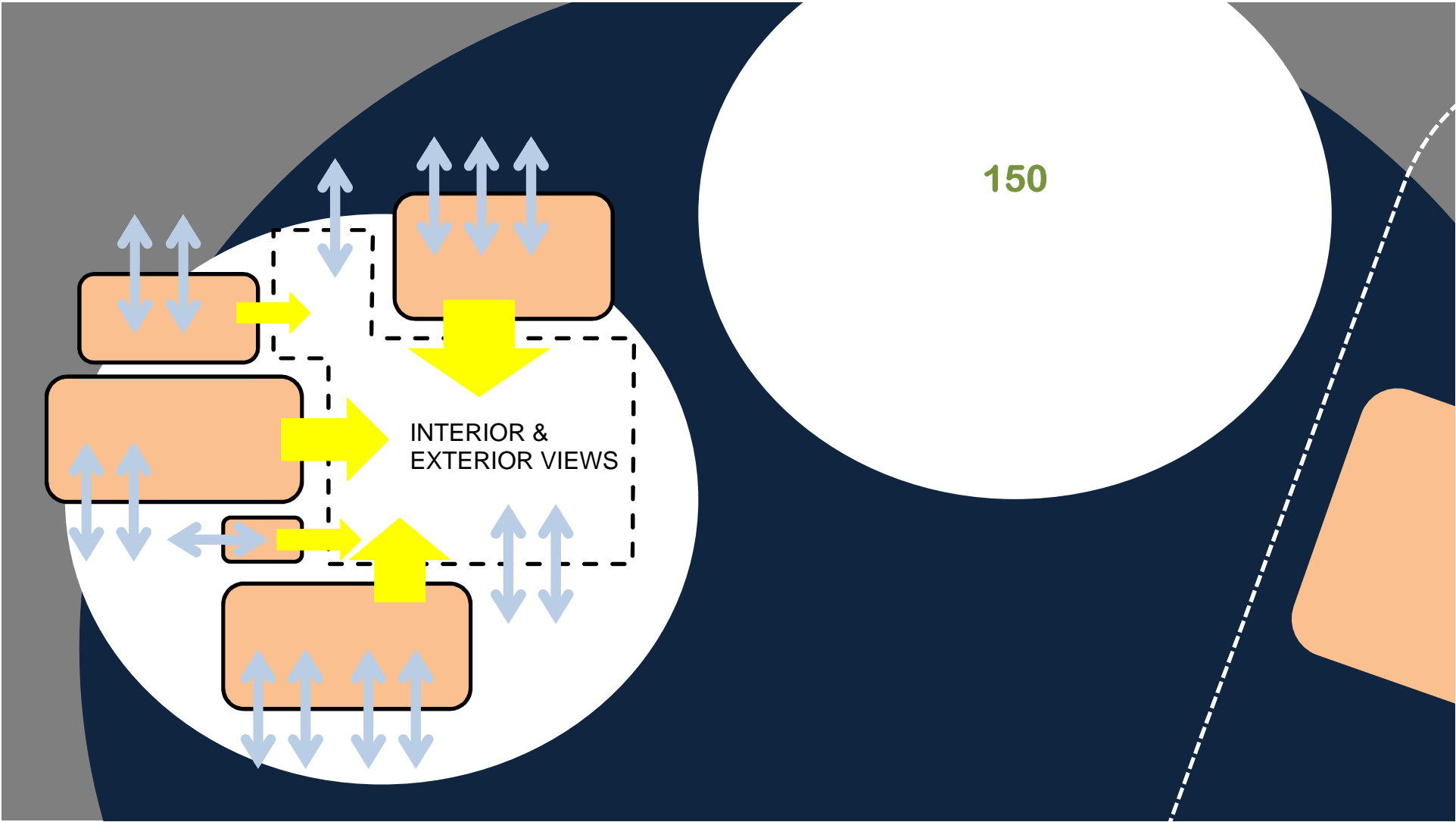
**Edutopia**

[www.edutopia.org](http://www.edutopia.org)

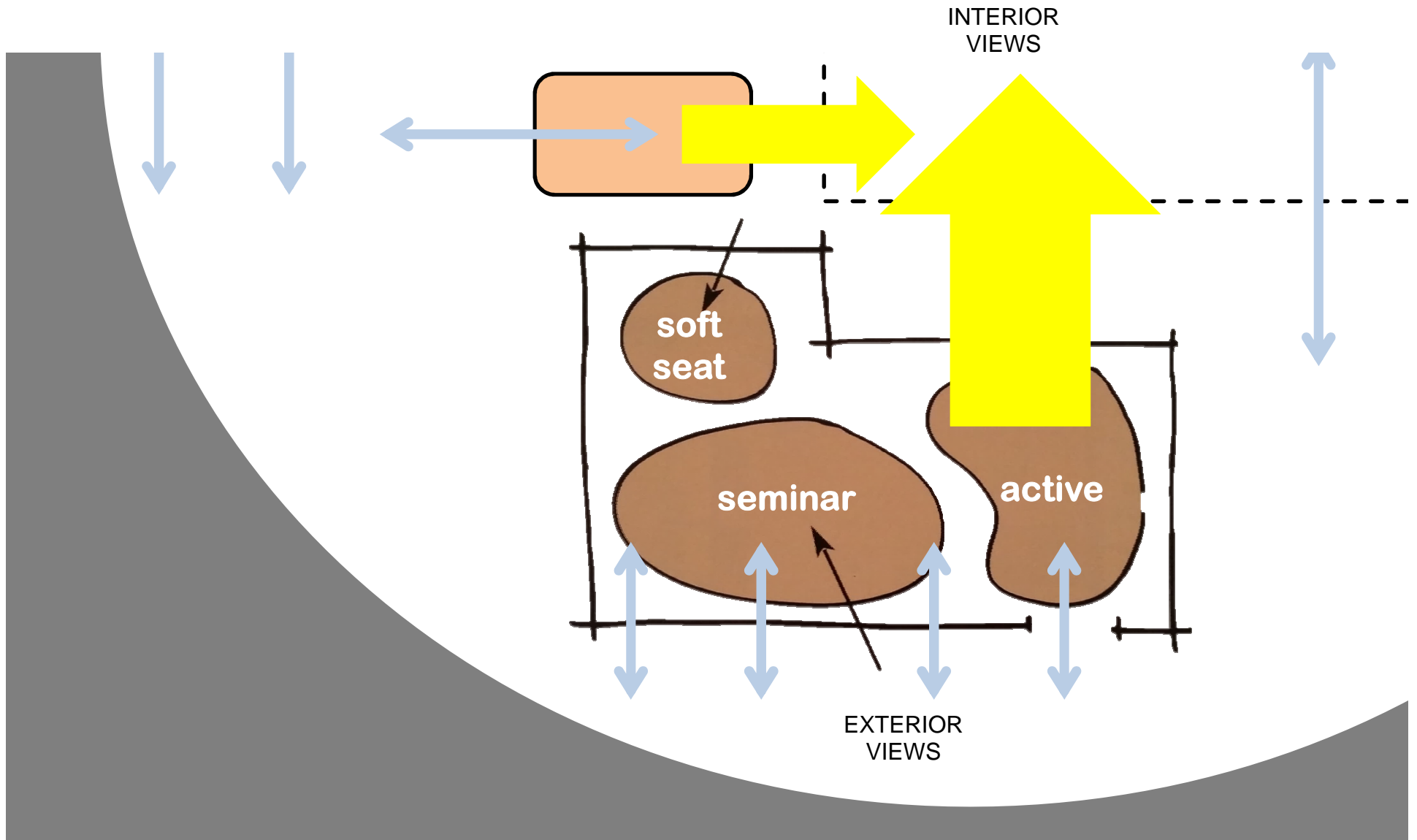
**Buck Institute for Education**

[www.BIE.org](http://www.BIE.org)

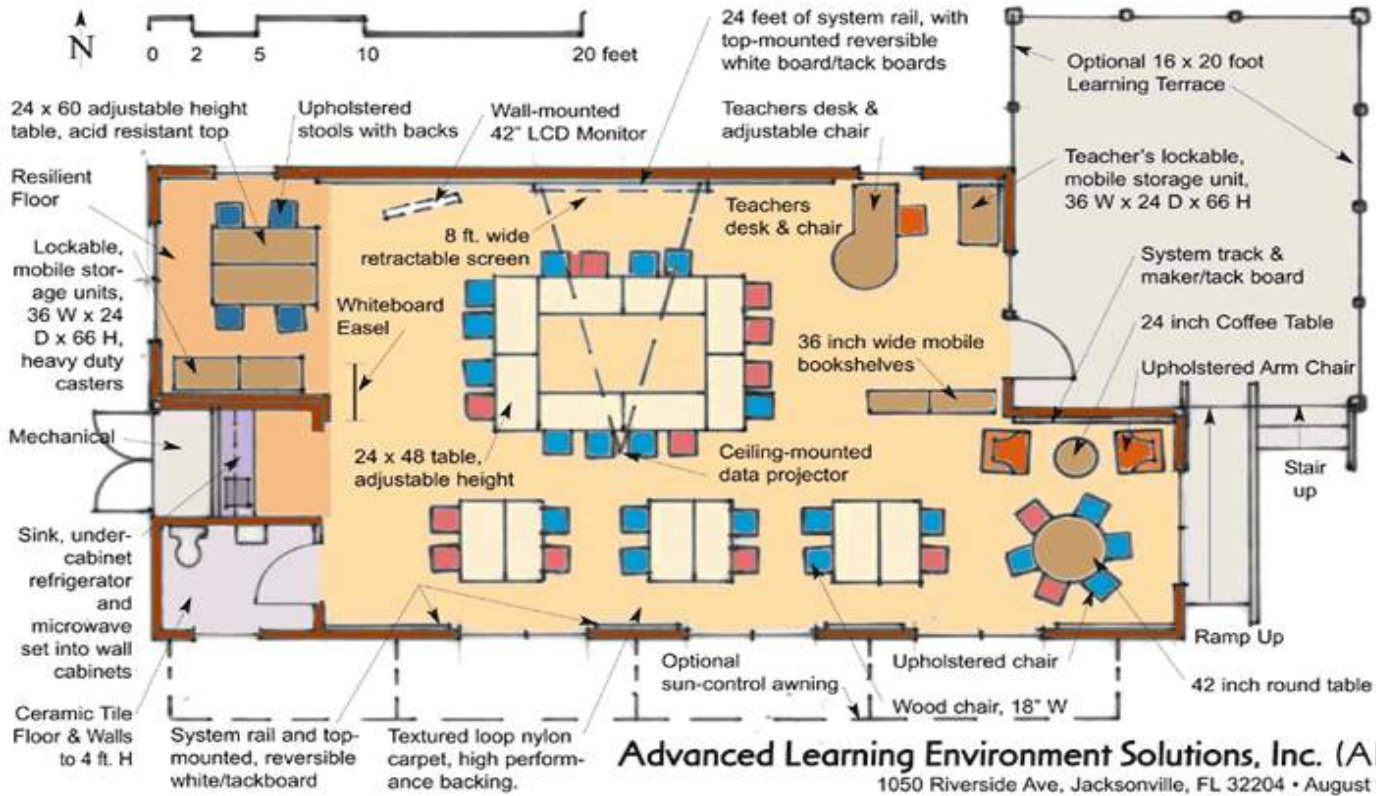




150



# MULTIPLE LEARNING ZONES FOR MULTI-MODAL LEARNING



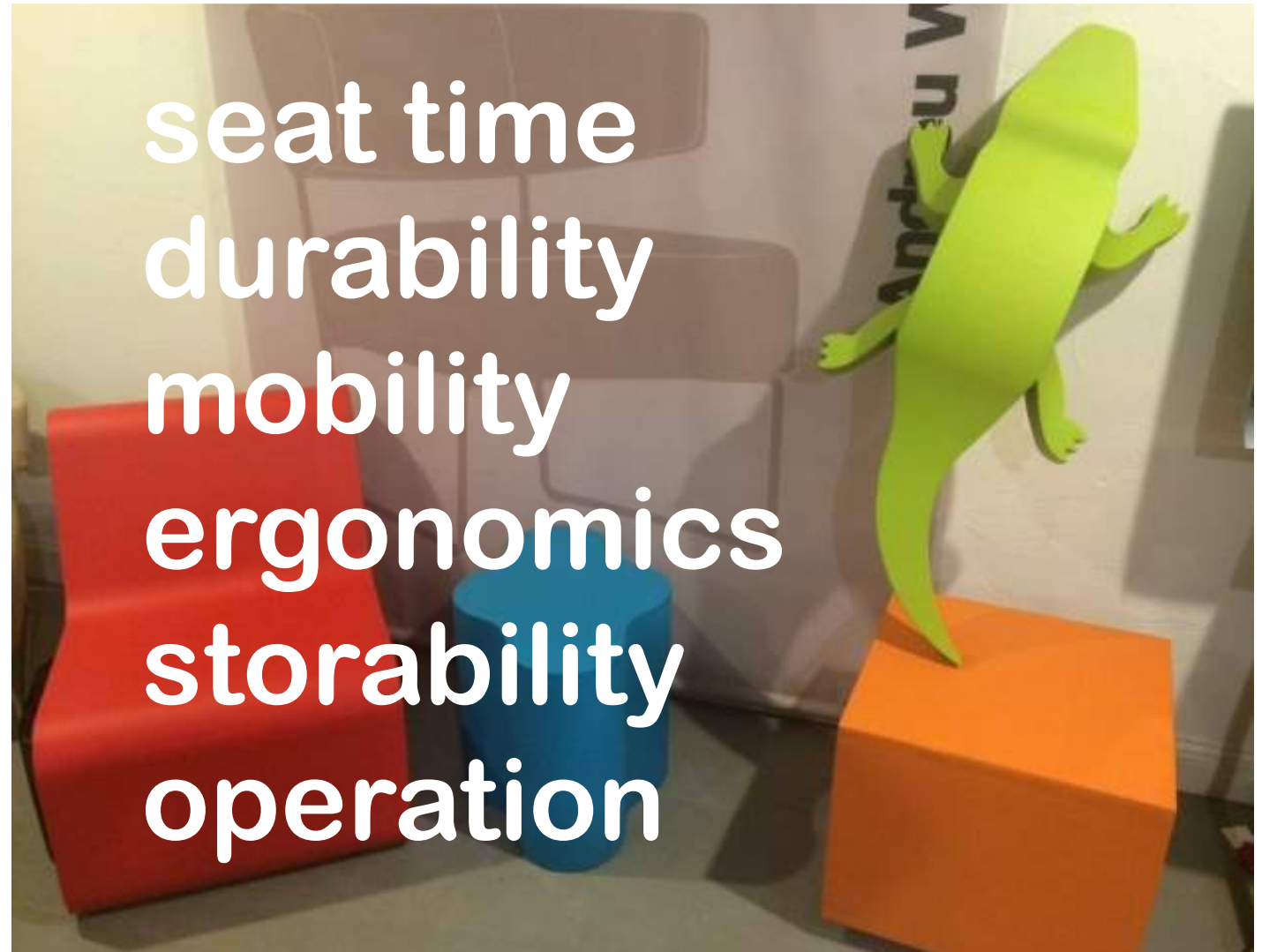
**Advanced Learning Environment Solutions, Inc. (ALESI)**  
1050 Riverside Ave, Jacksonville, FL 32204 • August 9, 2004

**Middle & High School Floor Plan**  
(Adaptable for Elementary School Students)

Copyright 2004 Fielding Nair International and Deployables, LLC. All Rights Reserved

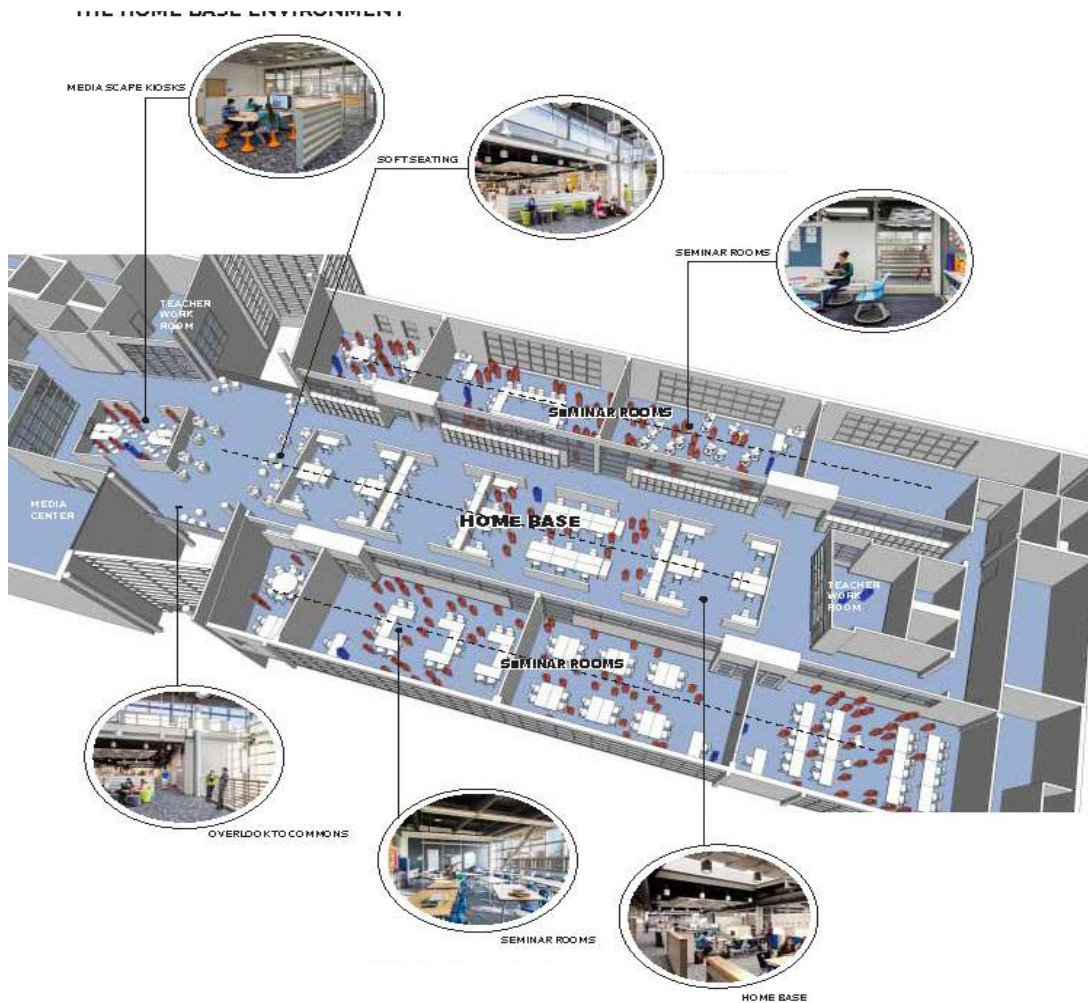
**Fielding Nair International, LLC**  
Innovative Learning Communities  
New York • Minneapolis • FieldingNair.com

WIDE VARIETY OF FURNISHINGS FOR STUDENT CHOICE



seat time  
durability  
mobility  
ergonomics  
storability  
operation





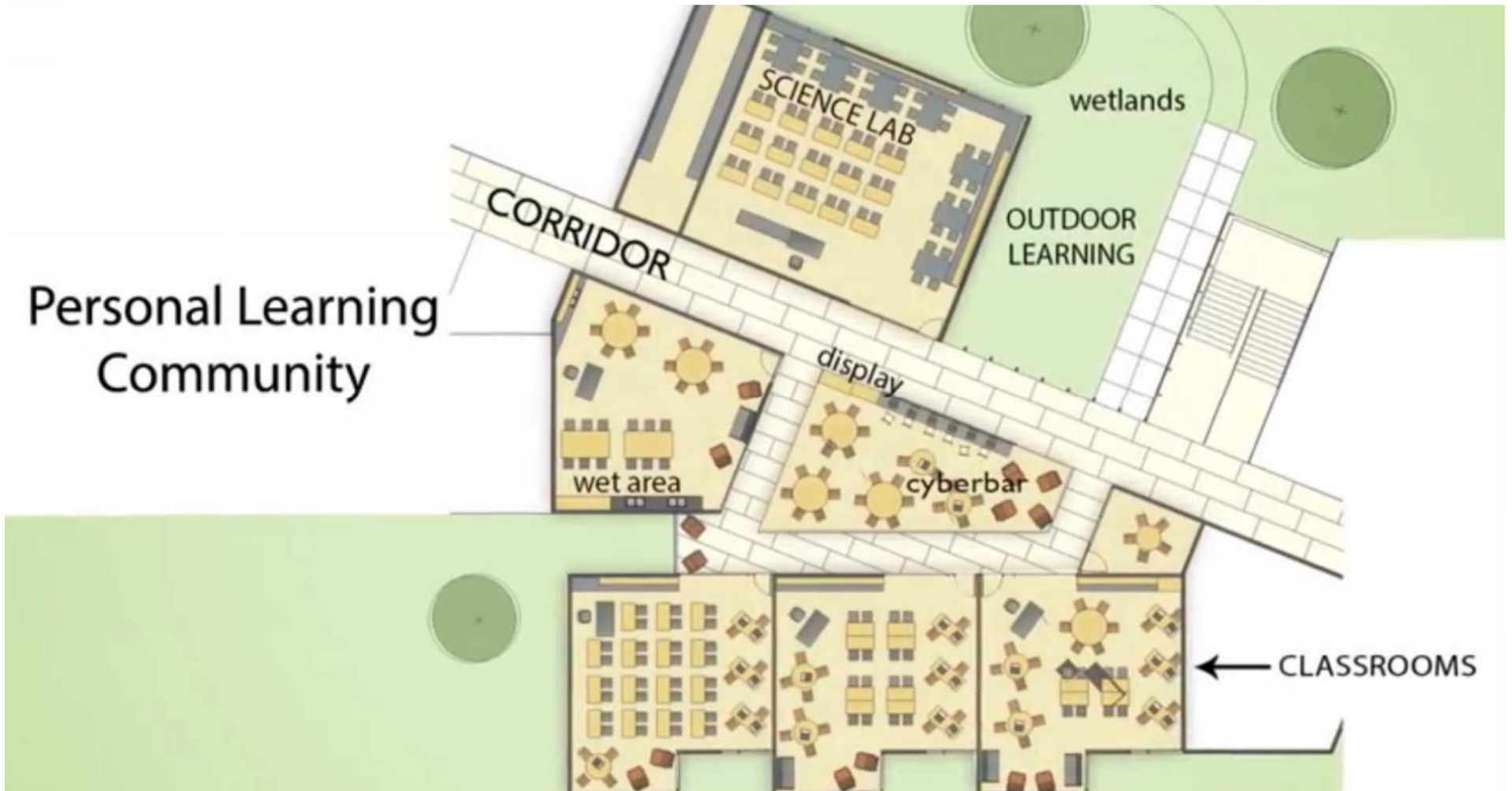
...designed to open up to multiple options for students and teachers to collaborate. The space is continuous and is gently delineated by half height walls.

Marine Technical High School | Groton, CT - J CJ Architects



Meadowdale Middle School | Lynnwood, WA – Integrus Architecture





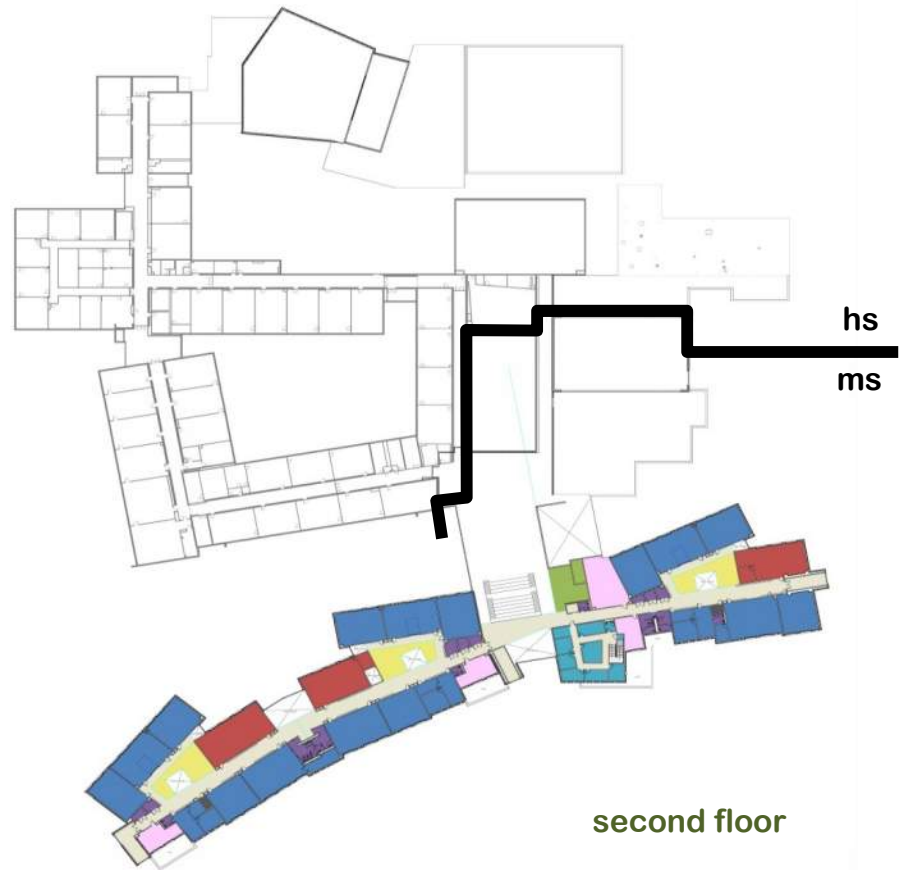
Meadowdale Middle School | Lynnwood, WA



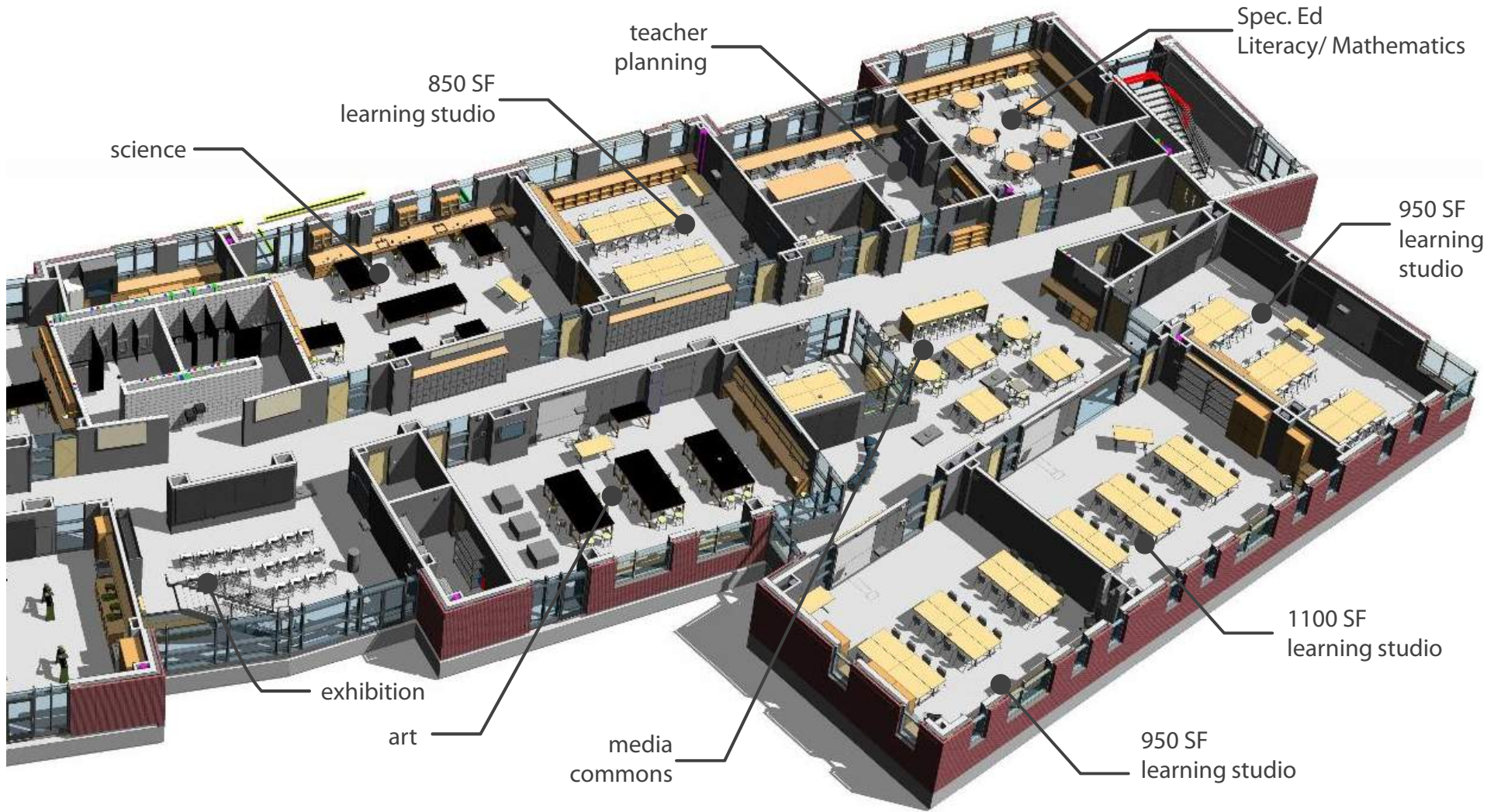


Forest Avenue Elementary School | Middletown, RI – Fielding Nair

our  
work



# scituate middle school | scituate, ma

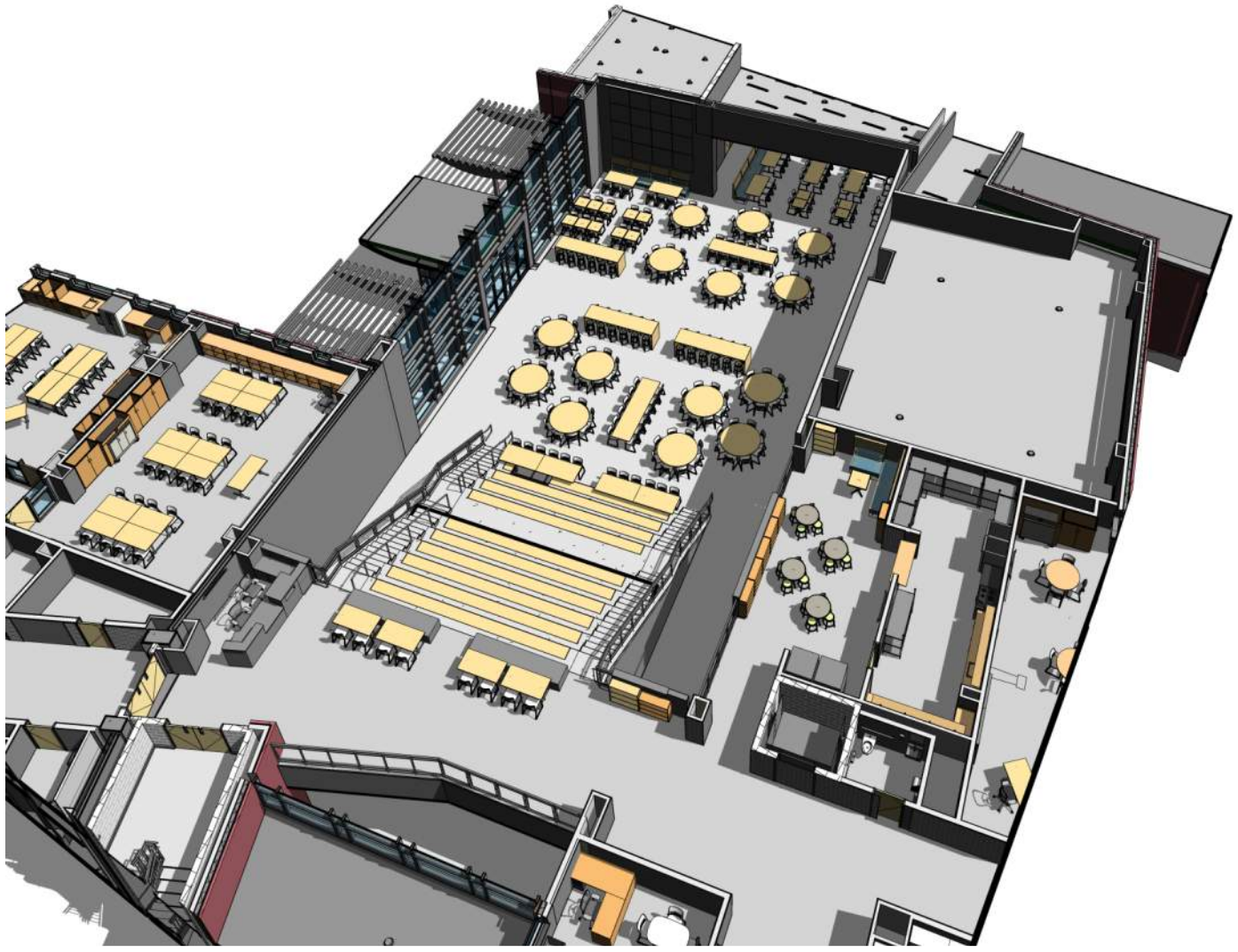












west parish  
gloucester, ma

dore & whittier architects



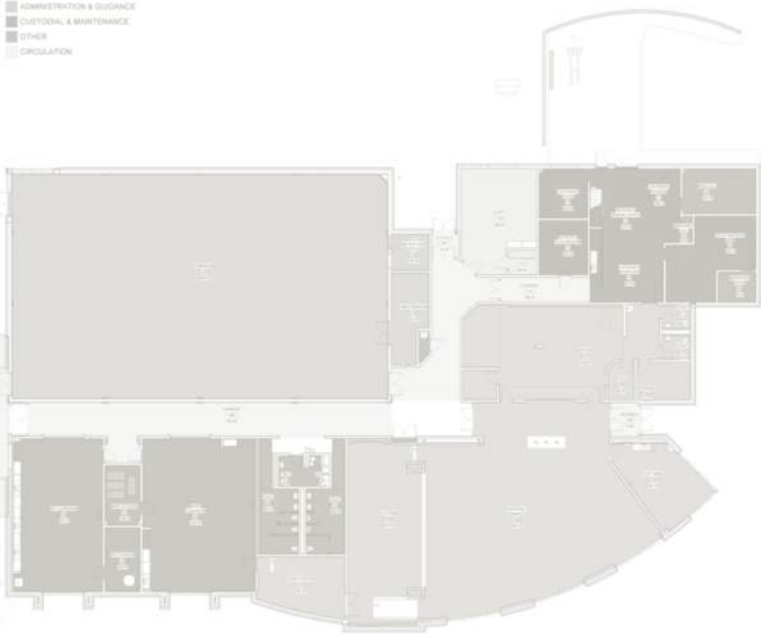
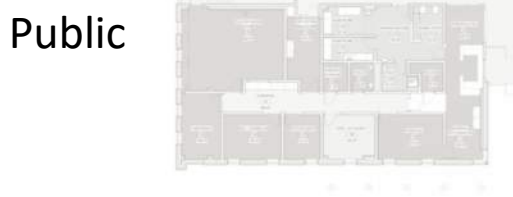
WEST PARISH SCHOOL  
LEVEL ONE FLOOR PLAN





Public

- MSBA SPACE SUMMARY
- CORE ACADEMIC SPACES
  - SPECIAL EDUCATION
  - ART & MUSIC
  - HEALTH & PHYSICAL EDUCATION
  - DINING & FOOD SERVICE
  - MEDICAL
  - ADMINISTRATION & GUIDANCE
  - CUSTODIAL & MAINTENANCE
  - OTHER
  - CIRCULATION







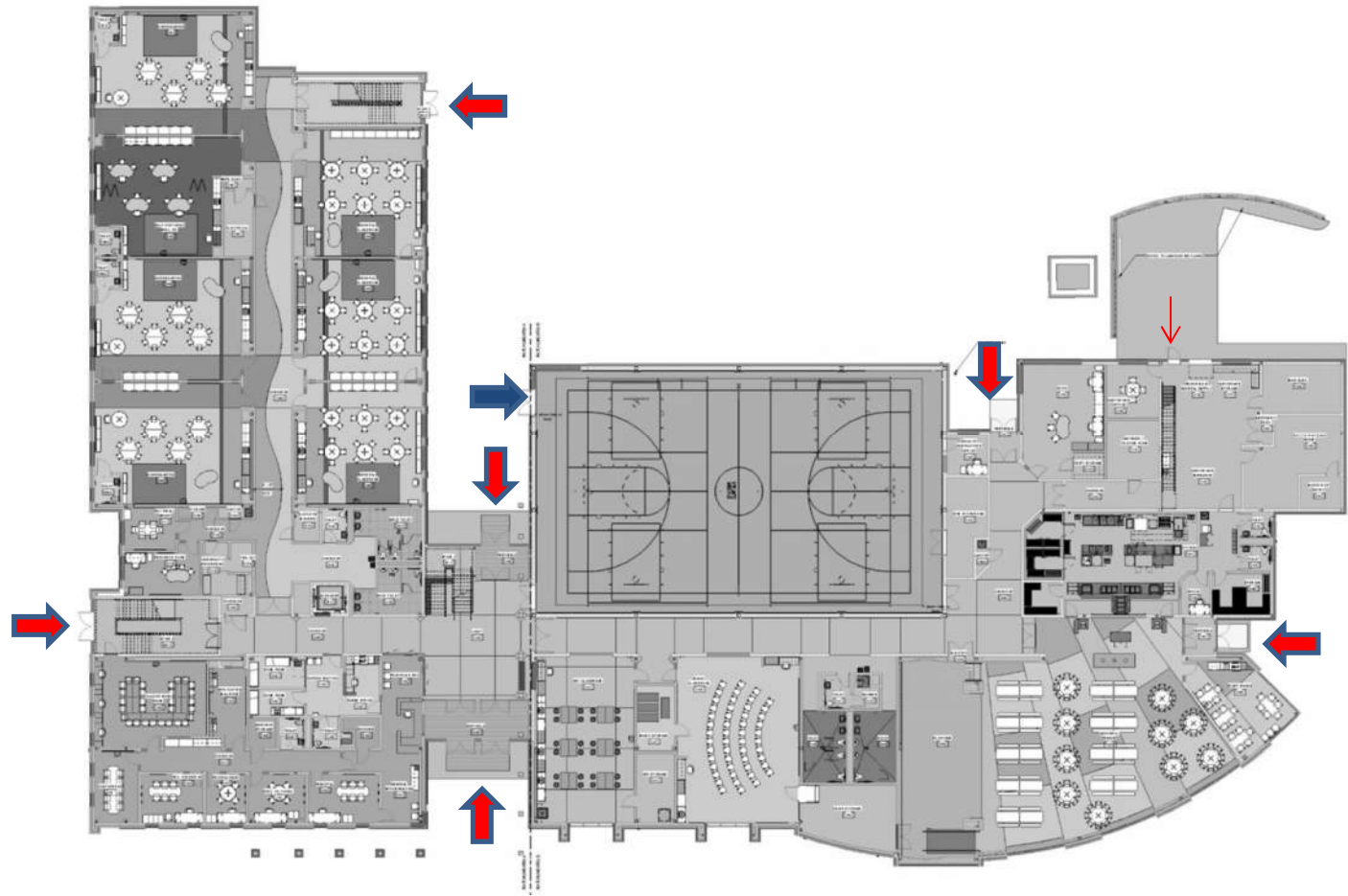
WEST PARISH SCHOOL  
LEVEL ONE FLOOR PLAN



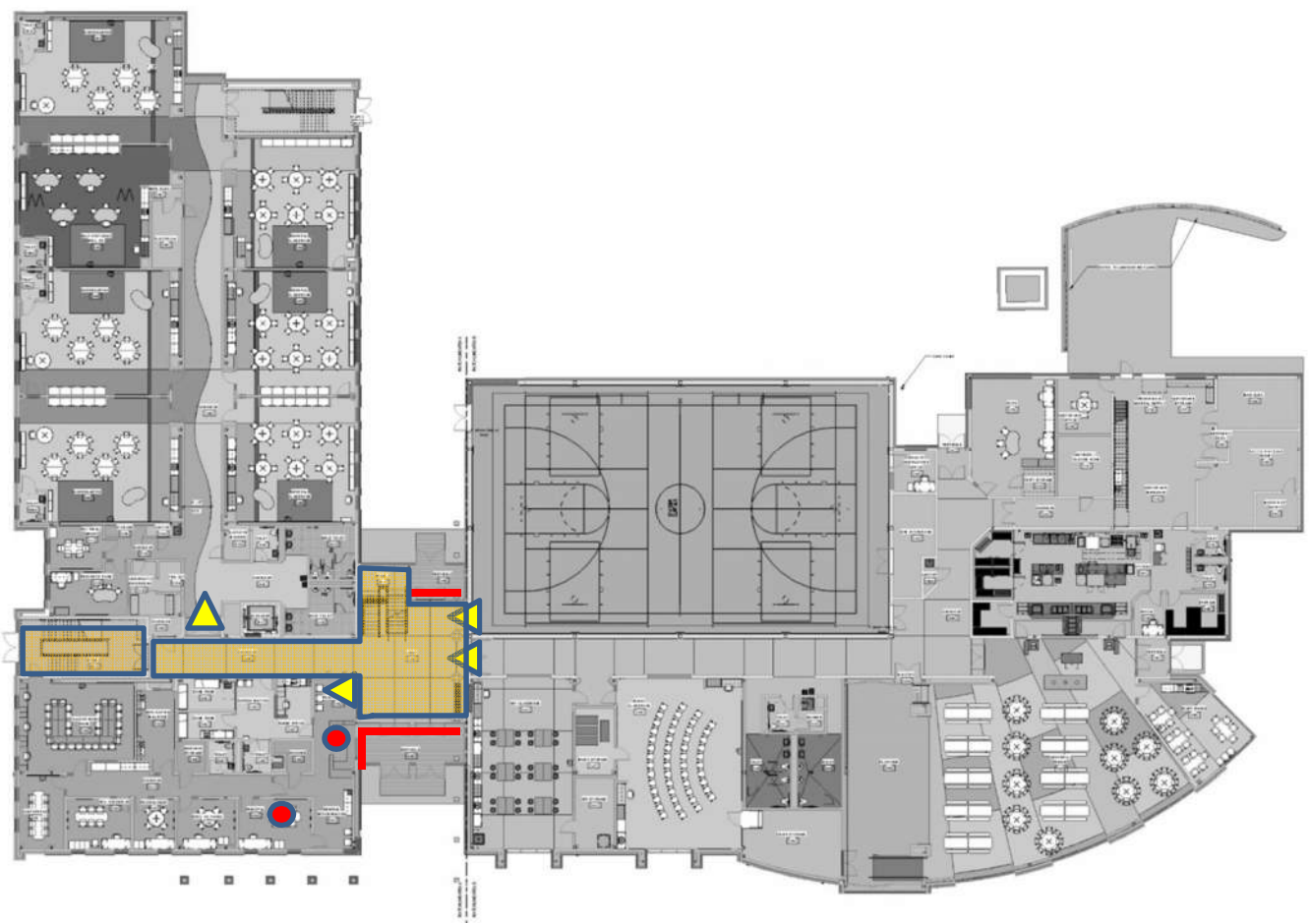
 **Entry Points**  
School Guard security  
glazing

 **Entry Points**  
½" tempered athletic  
glazing

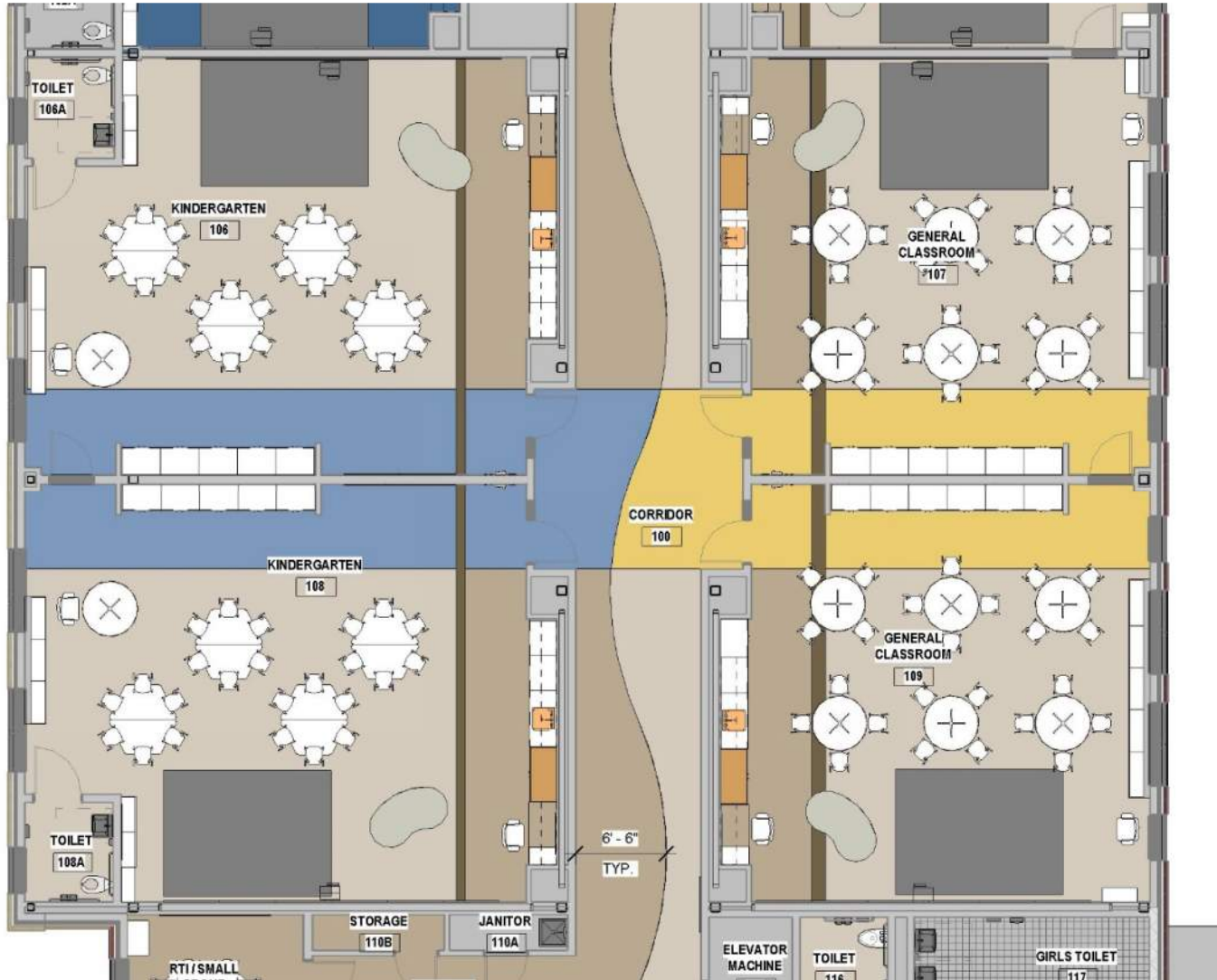
 **Entry Points**  
steel door – no glazing



- Panic Button location
- ▲ Doors on Panic Button includes library doors







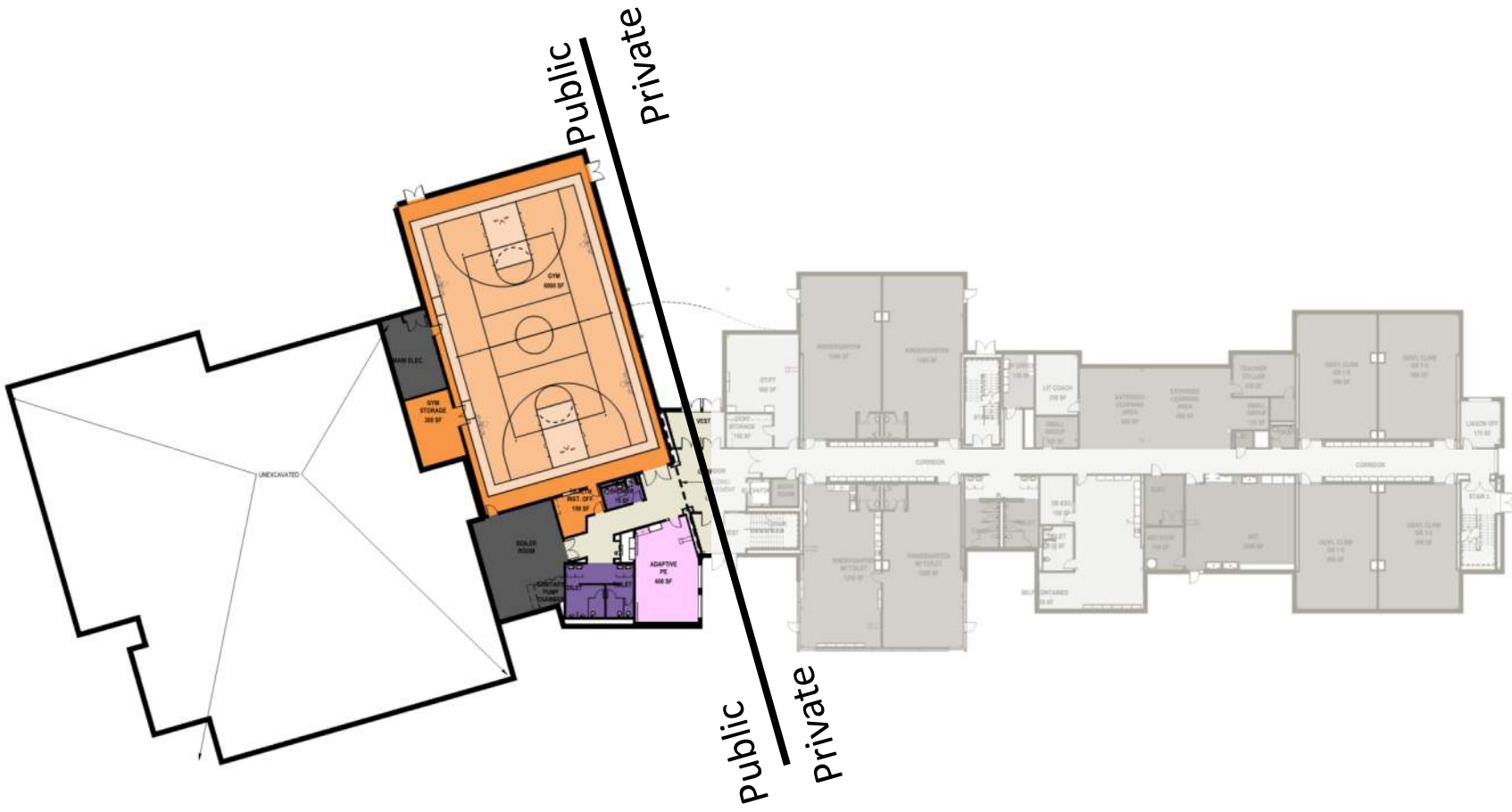


hillside  
needham, ma

dore & whittier architects

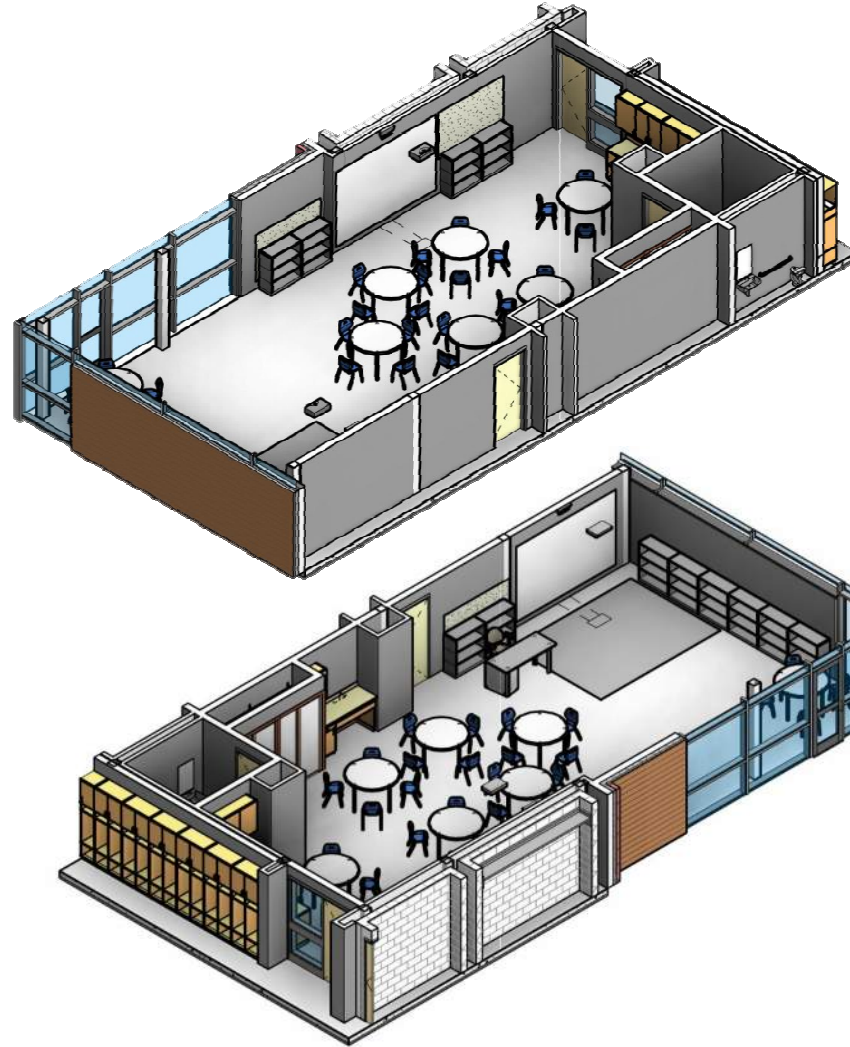
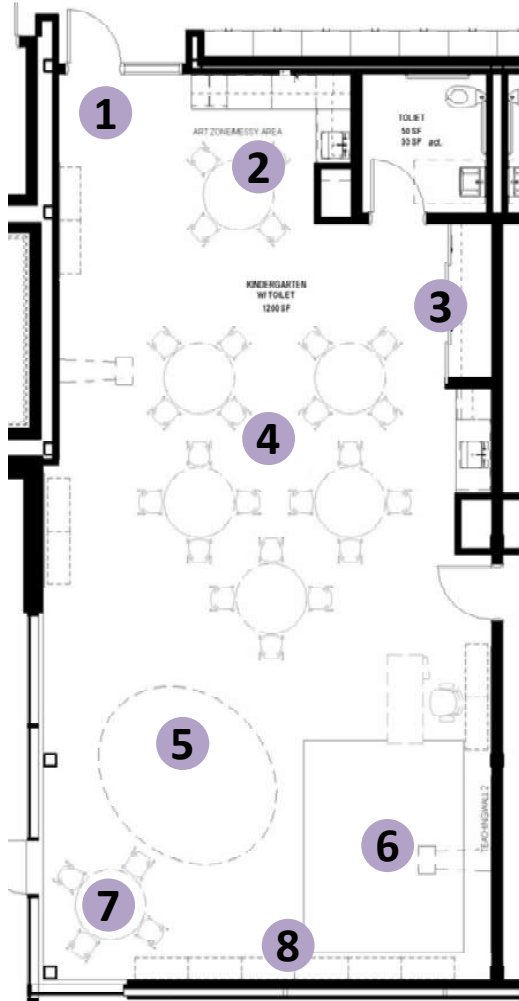






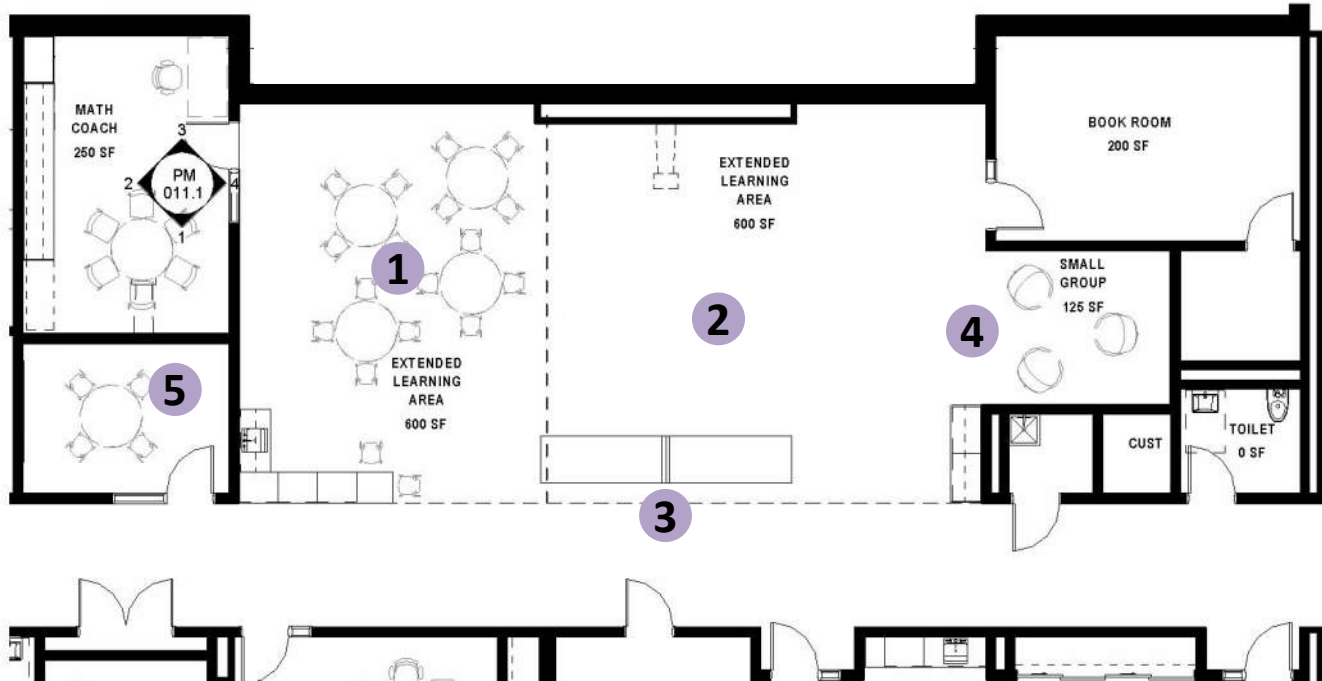






- 1** Entry Zone w/ Student Mailboxes
- 2** Messy Area w/ Sink & Storage
- 3** Concealed Storage w/ Magnetic Dry-erase
- 4** Table Top Activity Area w/ Digital Display
- 5** Active Play Station
- 6** Rug Activity Area w/ Digital Display
- 7** Small Group Break Out Area
- 8** Classroom Library





- 1** Messy, Science Activity Area w/ Sink & Storage
- 2** Open Floor Area for Grade Level Instruction
- 3** Cave Space for Sensory Break or Quiet Reading
- 4** Imagination Area w/ Magnetic Dry-erase
- 5** Acoustically Separate Small Group Break Out

